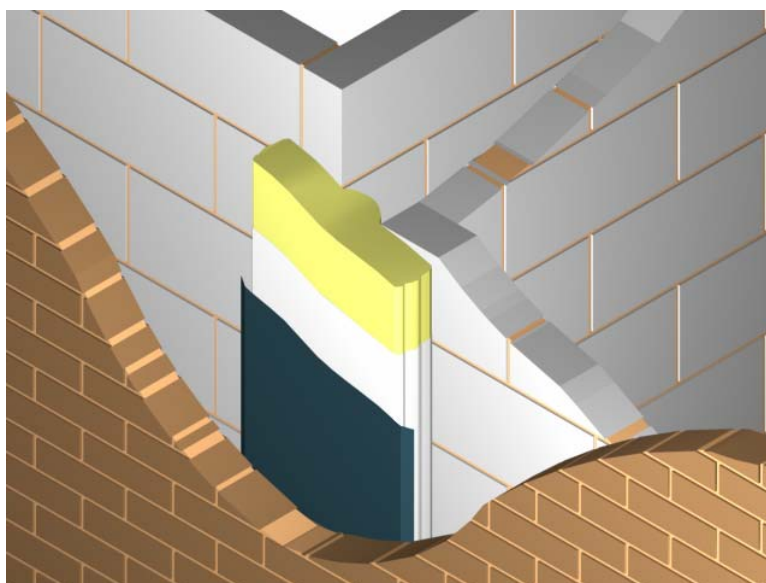




## Vertical Fire and Acoustic Party-wall Integrity Barrier



### Specification clause

Install yellow / blue / white\* Z-Led Acoustic Cavity Fire Barrier with Integrated DPC to provide either 30\* or 103 minutes\* fire resistance and sound reduction in the cavity to meet the Requirements of Building Regulation Approved Document B 2002, section 10.6 and Building Regulation Approved Document E1 2003. Install in accordance with manufacturers instructions.

\* Delete as appropriate

**T**he Z-Led Vertical Fire Barrier and Acoustic Party-wall is designed for use in double skin masonry or timber frame construction as a vertical cavity barrier. It is suitable for a range of cavity widths from 50mm to 100mm.

Providing minimum 30 minutes fire protection, the product has been developed to meet Building Regulation requirements, and to combine the benefits of a cavity fire barrier with integrated DPC whilst contributing to the reduction in flanking sound transmission in external wall cavities.



### Features

- Combined fire barrier and DPC system – provides the perfect solution.
- Fire resistant for 30 minutes (narrow format) **or** 103 minutes (wide format) – meets requirements of Building Regulation B 2002
- Robust product – Not easily damaged in transit or on site.
- Available in 3, colour coded, cavity widths. Yellow - 50-65mm, Blue 66 - 80mm and White 81 - 100mm.
- Does not absorb water – will not rot or promote mould growth
- Durable product – will perform for the life of the building
- Environmentally friendly – fire barrier contains glass wool which is made from naturally occurring minerals and recycled glass, DPC is made from polypropylene and is recyclable.



## Fire

Building Regulations require that the spread of fire within buildings, and from building to building is inhibited, particularly in concealed spaces such as cavities. Building Regulation Approved Document B 2002, Item 16, requires that a fire barrier should provide 30 minutes fire integrity and 15 minutes insulation integrity. The Z-Led Acoustic Cavity Fire Barrier has been tested to BS 476: Part 20: 1987 and meets these requirements.

## Sound

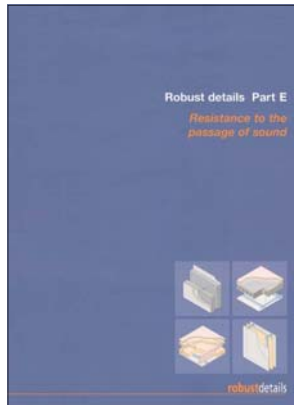
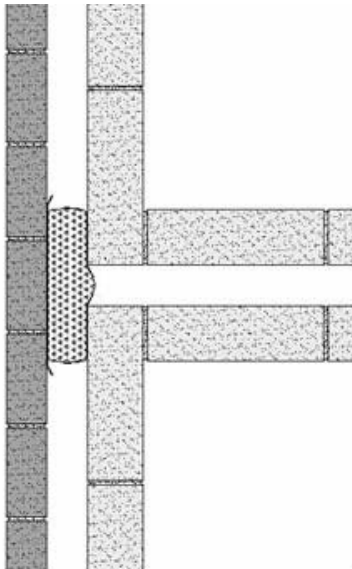
To meet the acoustic requirements of Building Regulation E1, residential buildings must be designed and constructed to provide reasonable resistance to sound from within and from adjoining buildings.

By following the recommendations given by Robust Details Limited it is possible to meet the requirement of Part E1 and eliminate the need for on-site testing, provided that:

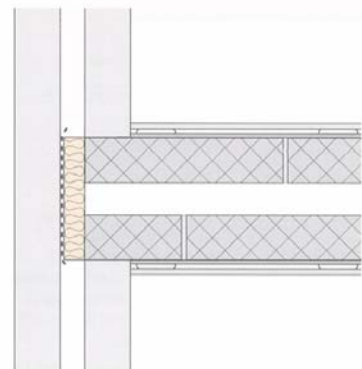
- (a) the notification specifies –
  - (i) the part or parts of the building in respect of which he is using the design detail;
  - (ii) The design detail concerned;
  - (iii) the unique number issued by Robust Details Limited in respect of the specified use of that design detail.”

## Z-Led Acoustic Cavity Fire Barrier with Integrated DPC

Glasswool acoustic cavity closure / fire barrier with integrated DPC



1. External (flanking) wall junction



Robust Details offers guidance for flanking sound reduction in external cavity walls at compartment floor and wall junctions. Following this guidance will enable compliance to Building Regulation Approved Document E1 2003 without the need for on site testing. (This applies to new build houses and apartments please refer to Robust Details Limited for details and reference numbers).

## Technical support

Z-LED offer a full technical advisory and estimating service. Simply forward floor plans, elevation and section drawings and we will prepare a detailed quotation covering all components required.



Z-LED Limited  
 Plymouth Avenue, Brookhill Industrial Estate  
 Pinxton, Nottingham NG16 6NS  
 Telephone 01773 814113  
 Fax 01773 814115  
 Email [info@z-led.com](mailto:info@z-led.com) Web site [www.z-led.com](http://www.z-led.com)

